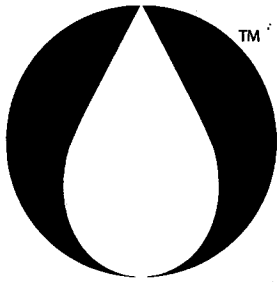


INSTALLATION AND OPERATING INSTRUCTIONS FOR BURNHAM COMMERCIAL FIRETUBE BOILERS



BURNHAM[®] COMMERCIAL[®]

AMERICA'S BOILER COMPANY[®]



For service and repairs to the heating plant, call you local representatives. When seeking information on the boiler, provide series and size designation shown on rating plate.

Boiler Number _____ Type Firing _____ Type System _____

Project _____

Address _____ Phone No. _____

IMPORTANT INFORMATION

Burner/boiler system, as used throughout this manual, shall mean all mechanical and/or electrical equipment including the boiler, burner, pumps, compressors, feed water systems and all associated piping, electrical and control systems used and maintained in the boiler room.

The following defined terms are used throughout this manual to bring attention to the presence of hazards or various risk levels or to note important information concerning the operating life of the product.

DANGER

Indicates presence of a hazard which will cause severe personal injury, death or substantial property damage if ignored.

WARNING

Indicates presence of a hazard which can cause severe personal injury, death or substantial property damage if ignored.

CAUTION

Indicates presence of a hazard which will or can cause minor personal injury or property damage if ignored.

NOTICE

Indicates special instructions on installation, operation or maintenance which are important but not necessarily related to personal injury hazards.

1. If you smell gas or fuel oil vapors, do not try to operate the burner/boiler system. Do not touch any electrical switch or use any phone in the building. Immediately call the gas or oil supplier from a remotely located phone.
 2. Burner/boiler systems produce steam or hot water in a pressurized vessel by mixing extremely flammable gaseous, liquid or solid fuels with air to produce combustion and very hot products of combustion. Explosions, fires, severe personal injury, death and/or property damage will result from improper, careless or inadequate installation, operation or maintenance of fuel-burning and boiler equipment.
 3. Insulate all steam and hot water piping, fittings and connections and all other hot components and equipment from personnel contact.
 4. Assure all pipes, fittings, electrical controls and all other associated burner/boiler equipment is of proper design and construction for the intended use and provides adequate protection from electrical shock and harmful physical contact to personnel.
 5. A leak-tight fuel delivery conduit and control system must be maintained at all times.
 6. Products of combustion must be transported from the boiler/burner system to the outdoors in an approved, leak tight, insulated venting system. The boiler room must be positively ventilated to prevent a concentration of products of combustion and a reduction in the amount of oxygen in the air.
 7. Burner/boiler materials of construction, products of combustion and fuels contain alumina, silica, heavy metals, carbon monoxide, nitrogen oxides, aldehydes, carbon dioxide, particulates and/or other toxic or harmful substances which can cause death or serious illness and which are known to the state of California to cause cancer, birth defects and other reproductive harm. Always use proper safety clothing, respirators and equipment when servicing or working near the equipment.
- ## WARNING
1. The equipment shall be installed in accordance with regulations in force in the area where the installation is to be made. These regulations shall be carefully followed in all cases. Authorities having jurisdiction shall be consulted before installations are made. All boiler installations in the USA should comply with the current edition of the following standards:
 - A. American national standard NFPA 31, "Installation of Oil Burning Equipment".
 - B. American national standard NFPA211, "Chimneys, Fireplaces, Vents, and Solid Fuel Burning Appliances".
 - C. American Society of Mechanical Engineers ASME CSD-1, "Controls and Safety Devices for Automatically Fired Boilers".
 2. All wiring on boilers shall be made in accordance with the National Electrical Code and/or local regulations.
 3. Installation, start-up, operation and/or maintenance (service) of this burner/boiler system must be undertaken only by trained and skilled personnel.

4. Failure to follow all instructions in the proper order can cause personal injury or death. Read all instructions, including all those in other boiler/burner system manuals, which were provided with the equipment before installing, operating or servicing.
5. Keep boiler area clear and free from combustible materials, gasoline and other flammable vapors and liquids.
6. Provide positive assurance that adequate combustion and ventilation air is provided from the outdoors to the burner/boiler system and boiler room.
7. Do not place any obstructions in the boiler room that will hinder the flow of combustion and ventilating air.
8. Carefully read this and all other manuals and instructions provided before proceeding with the installation or service of the burner/boiler system. Post all instructions and manuals near the boiler for reference by service personnel.
9. Refer to burner manufacturer's installation manual provided for proper venting of the gas train components that require atmospheric pressure to balance a diaphragm.
10. High water temperatures increase the risk of burns or scalding injury. Install an automatic mixing valve at any tankless heater outlet to avoid excessively hot water at the fixtures.
11. All cover plates, enclosures and guards must be in place at all times, except during maintenance and service.

NOTICE

1. This boiler has a limited warranty, a copy of which is printed on the back page of this manual.
2. It is the responsibility of the contractor to see that all the controls are correctly installed and are operating properly when the installation is completed.
3. For optimum performance and serviceability from this unit adhere to the following recommendations:
 - A. Clean firetubes at least once a year, preferably at the end of the heating season to remove soot and scale. Inside surfaces of the furnace, front and rear smokeboxes, and reversing chamber should also be cleaned at the same time.
 - B. Have the burner and controls checked at least once a year or as necessary.
 - C. Retain your contractor or a competent serviceman to assure that the unit is properly adjusted and maintained.

TABLE OF CONTENTS

SECTION I – General information

Introduction	6
Setting the Unit	6
Air Supply/Venting	6

SECTION II – Installation Instructions

Boiler Piping	7
Tankless Heater Piping	7
Flow Regulation	7
Hot Water Tempering	7
Heater Flushing	8
Hard Water	8
Boiler Installation	9-12

SECTION III – Operating Instructions

Filling System	13
Adjusting Burner	13
Testing Controls	13
Initial Cleaning, Steam Boilers	14
Initial Cleaning, Water Boilers	14
Water Boiler Operation	14-15
Boiler Water Treatment	15
pH or Alkalinity Test	15
Warnings about Frequent Water Addition	15

SECTION IV – Service Instructions

Boiler Shutdown and Cool Down Procedures	16
Cleaning Boiler Heating Surfaces	16-17
Maintenance of Low Water Cutoff Devices	17
Checking Burner & Controls	17
Lubrication	17
Checking Safety Valve	17
Attention to Boiler while not in Operation	17-18
Ordering Repair Parts	18
Periodic Testing Recommended Check List	19-20

SECTION I — GENERAL INFORMATION

1. GENERAL INFORMATION

The boiler is designed specifically for forced draft firing, is available with oil, gas or combination gas/oil burners, and operates with a combustion efficiency of over 80%.

This manual gives the necessary information for the proper installation, operation, maintenance and service of units. For special installation problems, contact Burnham Commercial, P.O. Box 3939 Lancaster, PA 17604, Phone: 888-791-3790.

2. INSPECT SHIPMENT carefully for any signs of damage.

A. All Equipment is carefully manufactured, inspected and packed. Our responsibility ceases upon delivery of boiler to the carrier in good condition.

B. Any Claims for damage or shortage in shipment must be filed immediately against the carrier by the consignee. No claims for variances from, or shortage in, orders will be allowed by the manufacturer unless presented within sixty (60) days after receipt of goods.

3. SETTING THE UNIT

Most boilers are equipped with lifting lugs to be used in maneuvering the boiler into position. On large boilers, where four lifting lugs are supplied, all four lugs should be used when lifting the boiler. Scotch boilers can also be rolled into position using roller skids under the leg supports, pipe rollers may cause damage. The unit should be located in the boiler room so as to provide ease of venting and adequate clearance for maintenance, serviceability and installation of piping.

The tube pull space listed in the Burnham Commercial product catalog must be provided at the front of the boiler. The coil pull space must be maintained at the front of units equipped with tankless coils. Floor construction should have adequate load bearing characteristics to bear the weight of the boiler filled with water. A boiler foundation is recommended if the boiler room floor is weak, uneven or if a water condition exists. These boilers are not for installation on combustible flooring. If dessicant package was ordered, be sure to remove from the boiler furnace using the rear access, and from the waterside using the manhole cover.

4. CHIMNEY OR VENT

On installations where a natural draft stack is used, causing high breeching drafts, the boiler locking blade damper (on boilers equipped with one) may require adjusting, or one may need to be installed at the boiler breeching. In multiple boiler installations, or in installations where the breeching draft may vary considerably, automatic draft controls in combination with a motorized damper may be required.

When considering the stack and breeching, the design should take into account that the boiler/burner combination will work best when the pressure at the boiler flue outlet is in the range of + or - 1/10 inch WC.

5. AIR SUPPLY

A sufficient air supply must be maintained at all times to the boiler room for proper performance of the unit. A permanent opening or duct should be provided so that the boiler input will not exceed 4,000 Btuh/in² of free area.

Example: Firing Rate (Gas) = 528 MBH
528,000 BTUH = 132 In² Free Area
4,000 BTUH/In²

Follow local building codes if they exceed these minimum requirements.

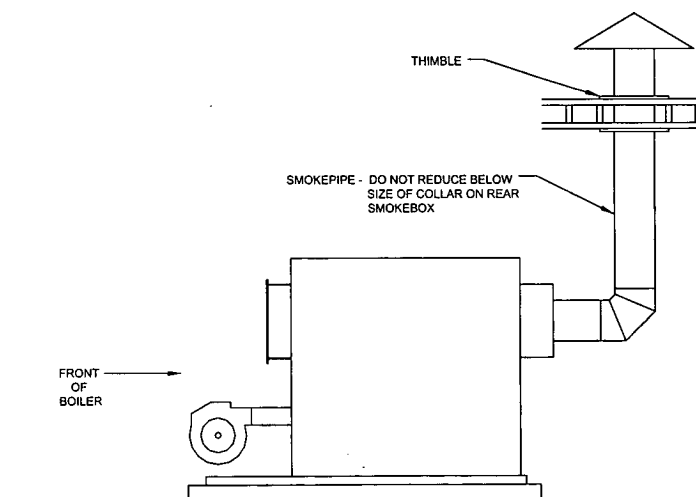


FIGURE 1
TYPICAL ARRANGEMENT FOR STUB VENT
TS-71-129-B

SECTION II — INSTALLATION INSTRUCTIONS

1. BOILER PIPING

Attach supply and return piping lines and insert plugs and bushings in connections as required. Supply and return piping headers are detailed in Figure 2 and Figure 3.

CAUTION

IT IS IMPORTANT TO COMPLY WITH THE MINIMUM PIPING REQUIREMENTS IN ORDER TO ENSURE MAXIMUM PERFORMANCE AND RELIABILITY. ON STEAM BOILERS, PARTICULAR ATTENTION SHOULD BE GIVEN TO THE CONSTRUCTION OF THE SUPPLY HEADER.

WARNING

The nominal temperature differential between supply and return water recommended for Burnham firetube water boilers is 20°F. As a precaution against thermal shock, this differential should never exceed 40°F.

When differentials in excess of 30°F are anticipated on firebox boilers, the return water should enter the boiler at the top fitting (normally the supply) and the supply water should leave the boiler through the bottom fitting (normally the return). This flow pattern directs the return water over the relatively cool third pass rather than directly against the rear of the furnace.

The boiler should not be operated for any length of time at a temperature setting that allows the formation of condensation in the tubes or smokebox. This generally dictates a minimum setting of approximately 140°F on the low limit on systems with a 20°F system differential. On cold start up, condensation can be expected until the boiler warms up. If formation of condensate persists, the low limit should be adjusted upward until condensate no longer forms.

2. RECOMMENDED WATER BOILER RECIRCULATION LOOP

The following guidelines relating to system water temperature fluctuation and flow through the boiler must be observed.

- A. It is important to operate your boiler in such a manner as to prevent temperature fluctuation of more than 40°F at any time. Rapid temperature changes within the boiler can create stresses in the boiler metal. These stresses can cause damage to the boiler by loosening tubes, or in more severe instances can crack tube sheet ligaments, furnaces, or waterlegs.
- B. If temperature differentials approach 40°F, to help prevent temperature fluctuations and insure proper circulation through the boiler, a recirculation loop as shown in Figure 5 should be considered.

The recirculation flow should be at least 1/2 GPM/BHP at all times when the boiler is online for operation.

3. TANKLESS HEATER

A. If boiler is ordered with tankless heater, connect tankless heater piping as shown in Figure 2.

WARNING

Install an automatic mixing valve at the tankless heater outlet to avoid risk of burns or scalding due to excessively hot water at the fixtures. Adjust and maintain the mixing valve in accordance with the manufacturer's instructions.

B. The following guidelines should be followed when piping the tankless heaters:

4. FLOW REGULATION

If flow through the heater is greater than its rating, the supply of adequate hot water may not be able to keep up with the demand. For this reason a flow regulator matching the heater rating should be installed in the cold water line to the heater. The flow regulator should preferably be located below the inlet so it's not subjected to excess temperatures that may occur during "off" periods when it is possible for the heat to be conducted back through the supply line. The flow regulator also limits the flow of supply water regardless of inlet pressure variations in the range of 20 to 120 psi.

5. TEMPERING OF HOT WATER

Installation of an automatic mixing valve will lengthen the delivery of the available hot water by mixing some cold water with the hot. This prevents excessive and possibly scalding hot water. Higher temperature hot water is possible by piping the hot water from the heater prior to entering the mixing valve. The mixing valve should be "trapped" by installing it below the cold water inlet to heater to prevent lime formation in the valve.

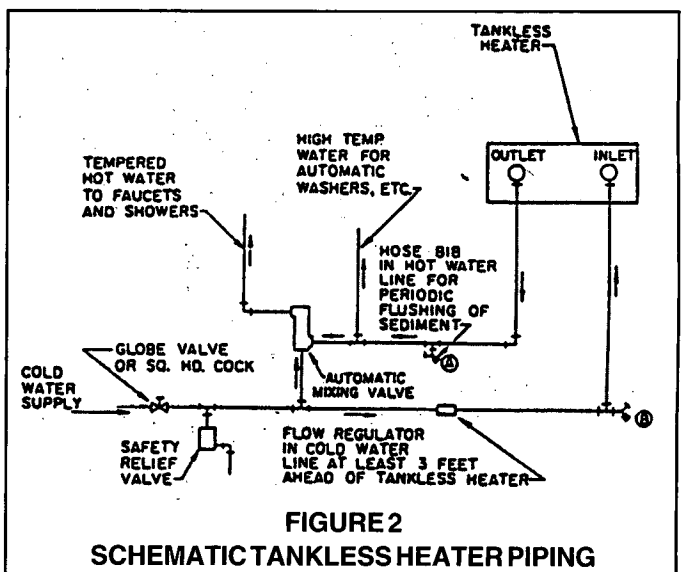


FIGURE 2
SCHEMATIC TANKLESS HEATER PIPING

6. FLUSHING THE HEATER

All water contains some sediment which settles on the inside of the coil. Consequently, the heater should be periodically backwashed. This is accomplished by installing hose bibs as illustrated and allowing water at city pressure to run into hosebib A, through the heater, and out hosebib B until the discharge is clear. The tees in which the hosebibs are located should be the same size as heater connections to minimize pressure drop.

7. HARD WATER

May be applicable to some city and particularly well water. Have your water analyzed by a qualified water treatment specialist to determine if a water softener, conditioner or filtration is required. Treated water will ensure longer tankless heater life and performance and is also beneficial to all the piping and fixtures in the building.

INSTALLATION INSTRUCTIONS

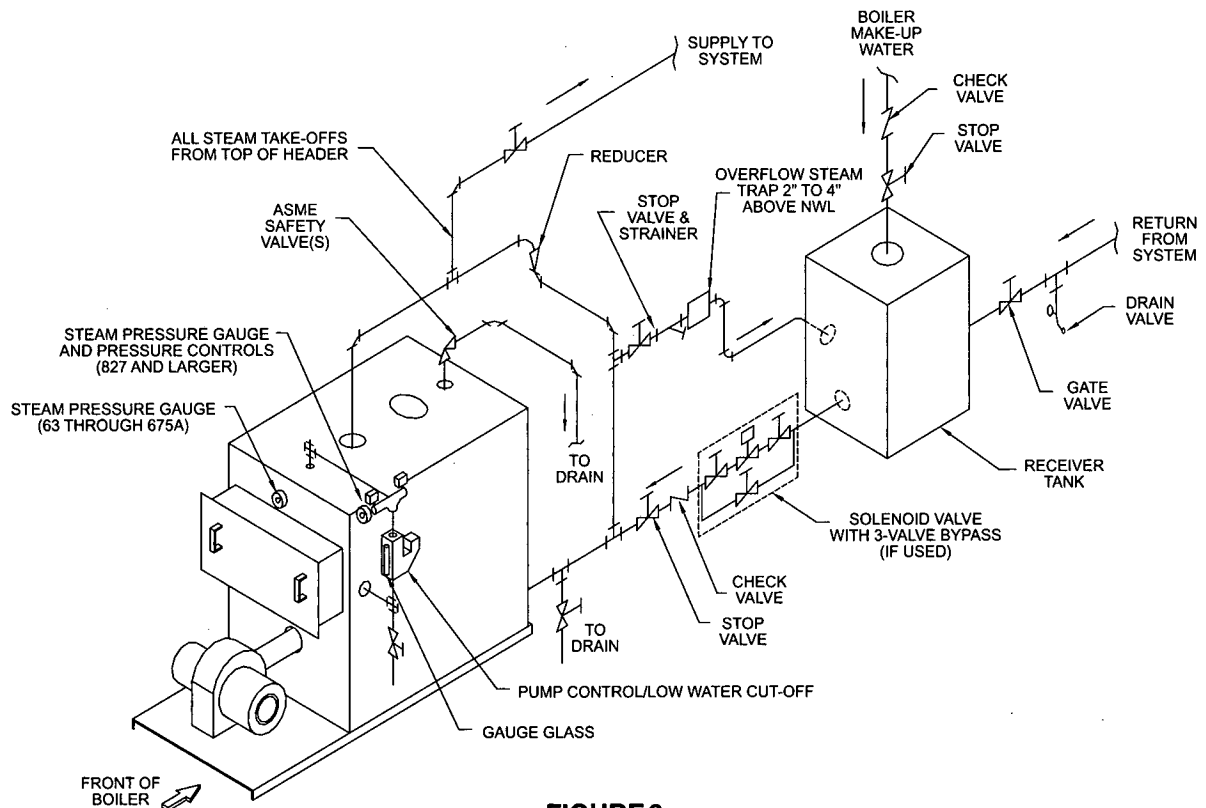


FIGURE 3

MINIMUM PIPING FOR SINGLE LOW PRESSURE FIREBOX STEAM BOILER

TS-71-131-D

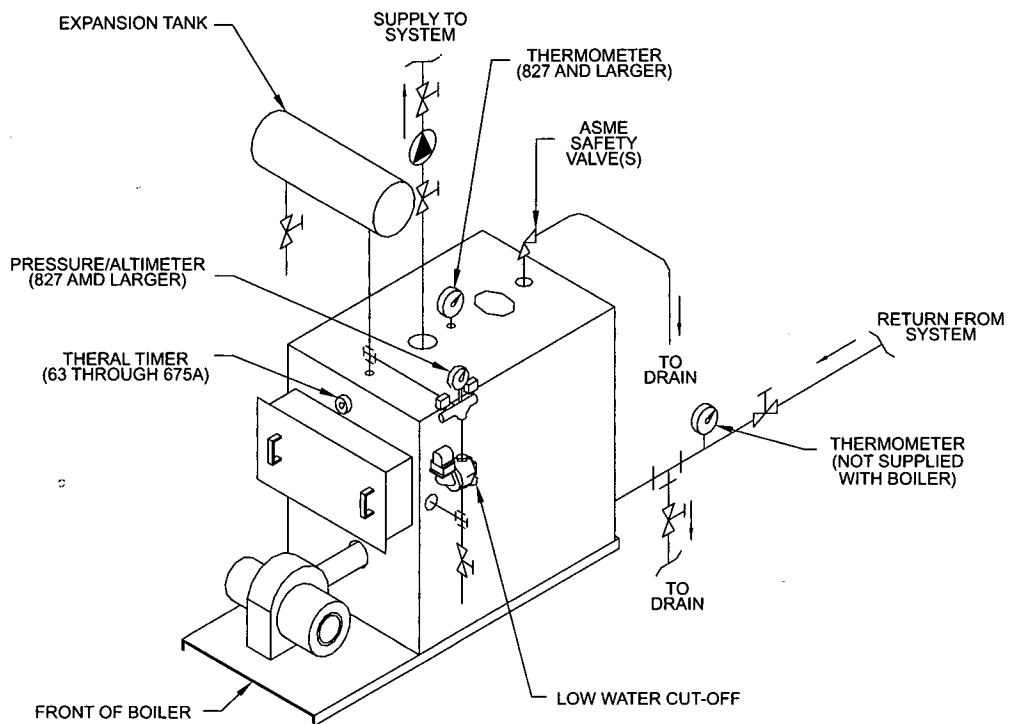


FIGURE 4

MINIMUM PIPING FOR A SINGLE LOW PRESSURE FIREBOX WATER BOILER

TS-71-130-D

INSTALLATION INSTRUCTIONS

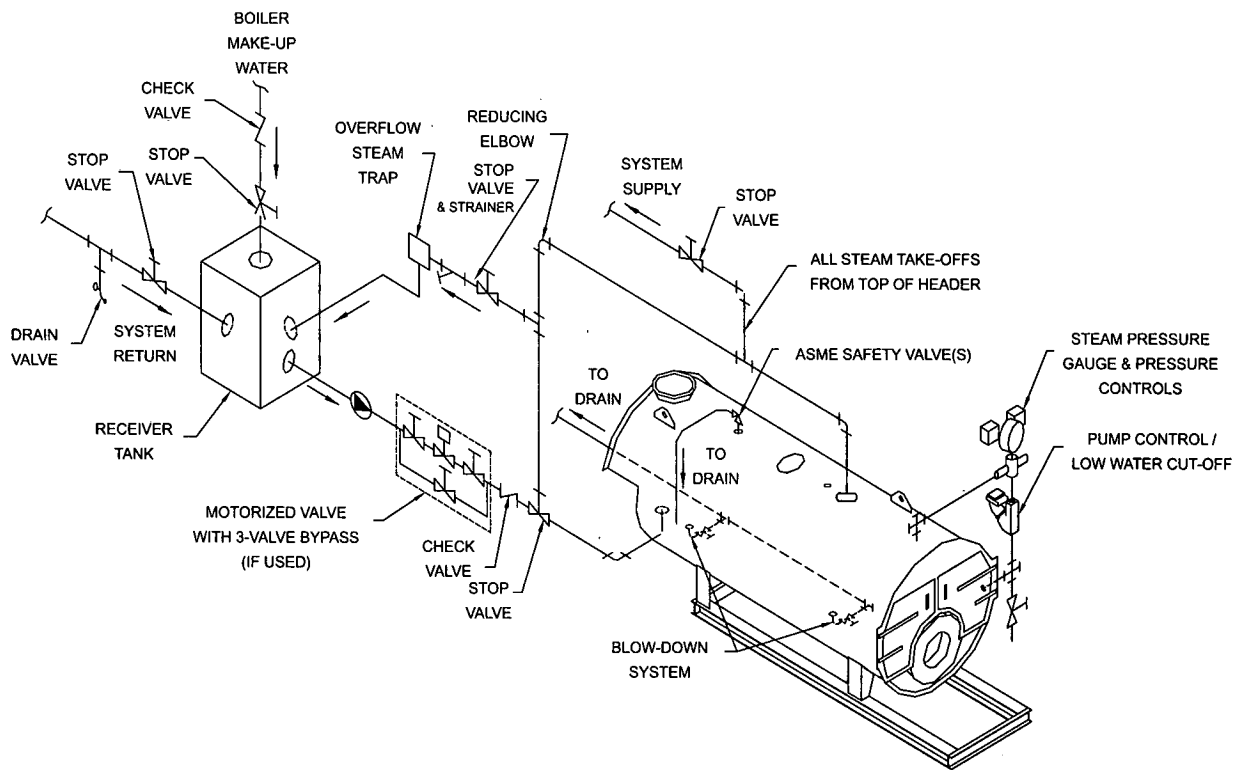


FIGURE 5

RECOMMENDED BOILER PIPING FOR A SINGLE LOW PRESSURE SCOTCH STEAM BOILER WITH PUMPED RETURN

TS-71-124-D

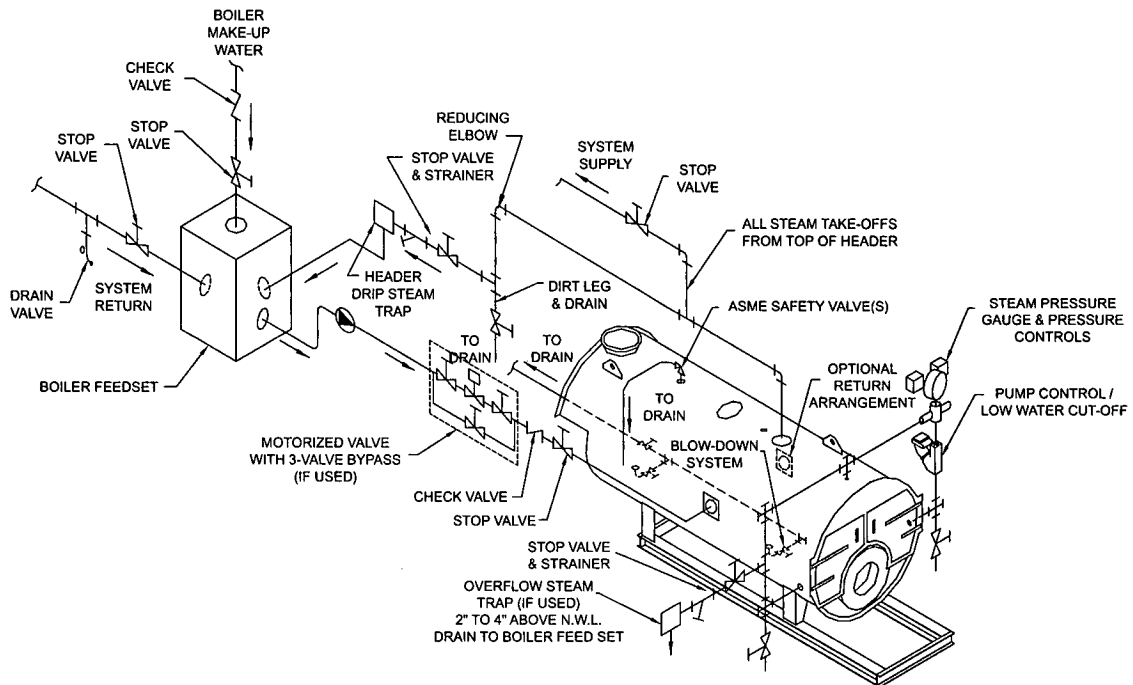


FIGURE 6

RECOMMENDED BOILER PIPING FOR SINGLE HIGH PRESSURE STEAM BOILER WITH PUMPED RETURN

NOTES:

- (1) When pump discharge piping exceeds 25 ft. install swing check valve at pump discharge.
- (2) If pump discharge is looped above normal boiler waterline, install a spring-loaded check valve at return header and at pump discharge.

TS-71-125-D

INSTALLATION INSTRUCTIONS

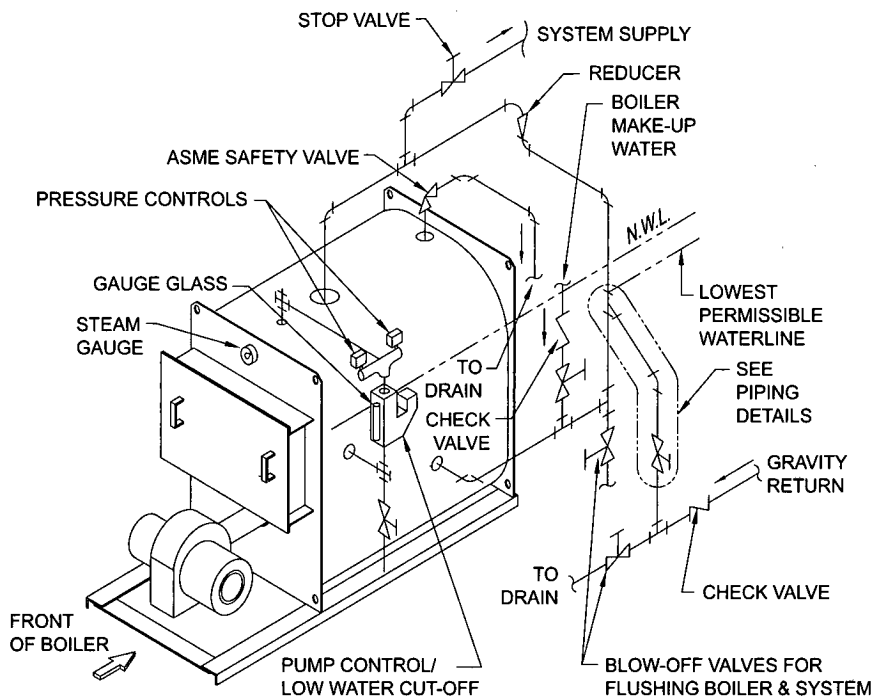


FIGURE 7

**RECOMMENDED MINIMUM BOILER PIPING - E OR C SERIES STEAM BOILER
GRAVITY RETURN**

TS-71-157-C

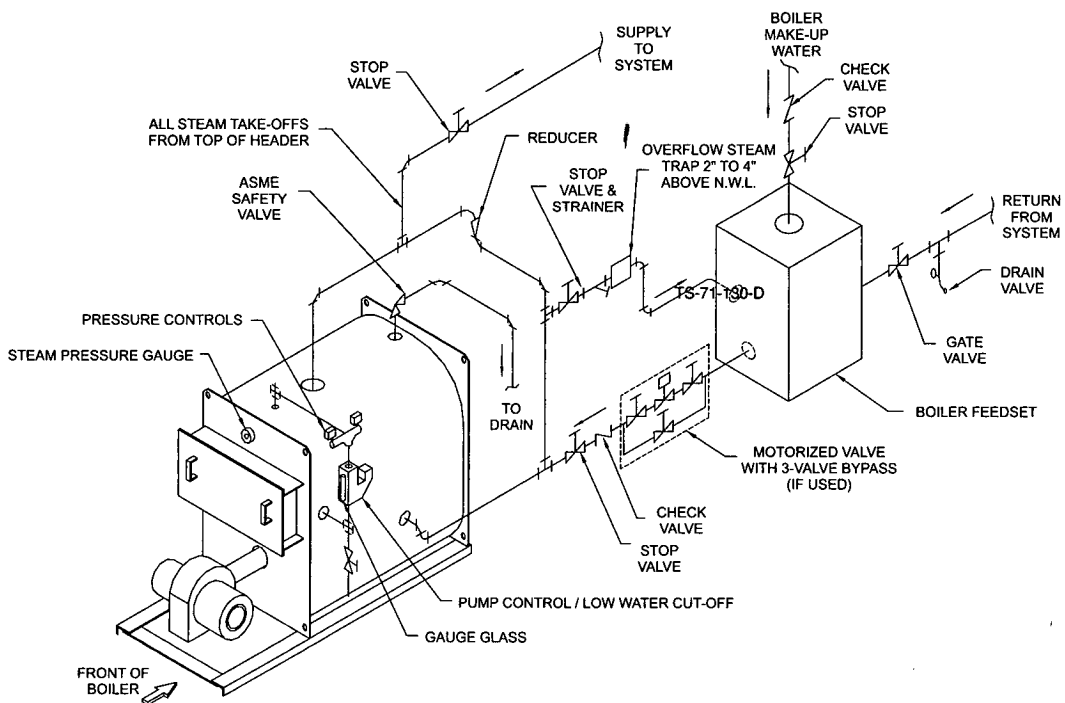


FIGURE 8

RECOMMENDED BOILER PIPING - SINGLE STEAM BOILER E SERIES OR C SERIES PUMPED RETURN

TS-71-155-D

INSTALLATION INSTRUCTIONS

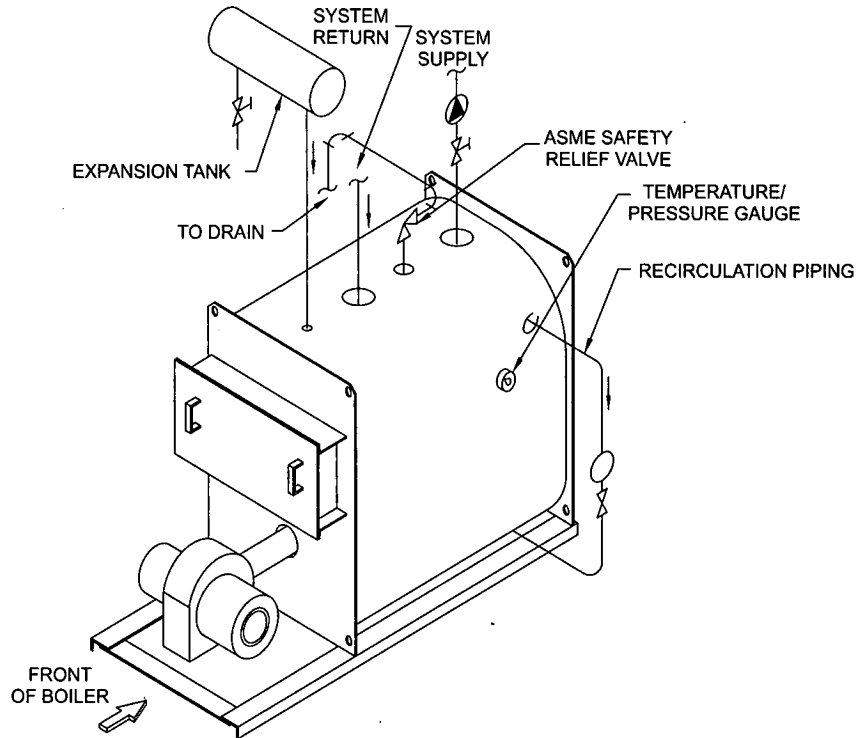


FIGURE 9

RECOMMENDED MINIMUM BOILER PIPING - E OR C SERIES WATER BOILER

TS-71-154-C

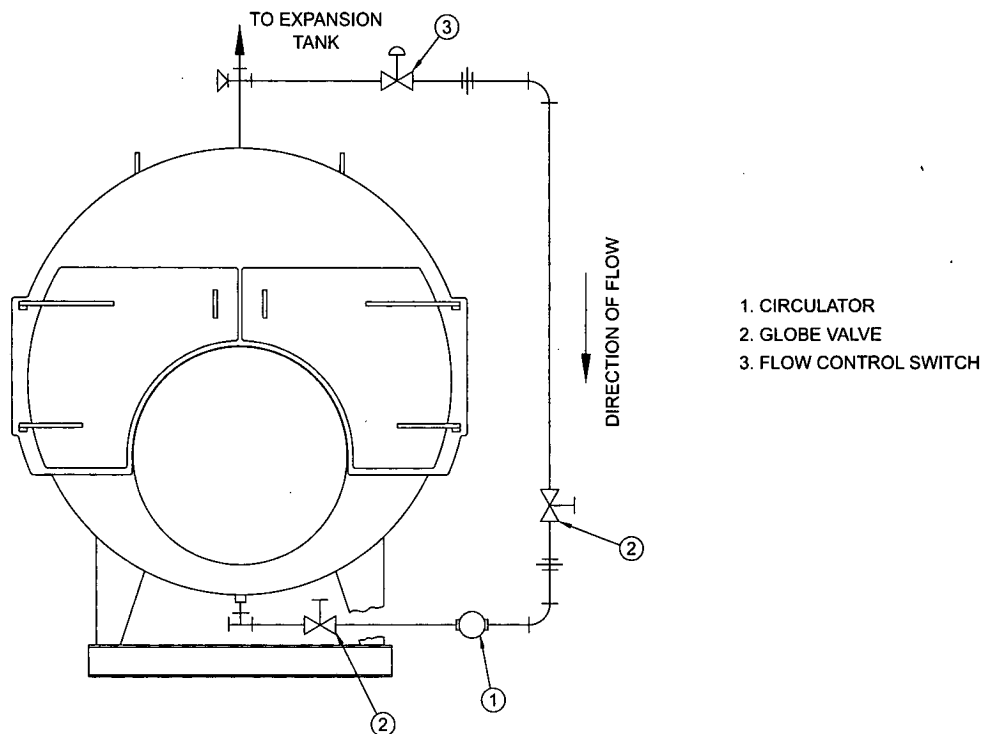


FIGURE 10

RECOMMENDED WATER BOILER RECIRCULATION LOOP PIPING

TS-71-127-D

SECTION III — OPERATING INSTRUCTIONS

1. Always inspect installation before starting burner.
2. Fill heating system with water.

IMPORTANT

Any time that raw water is introduced to the boiler it must be heated to at least 180°F immediately to dissipate the dissolved gases which can otherwise cause internal corrosion to the boiler.

- A. Steam Boilers – Fill boiler to normal water line. Water should be visible in the gauge glass. After boiler is in operation, make up water should be added slowly to maintain the water level.
- B. Hot Water Boilers – In a hot water heating system, the boiler and the entire system (other than the tank) must be full of water for satisfactory operation. Water should be added to the system until the boiler pressure gauge registers normal system design operating pressure. To ensure that the system is full, water should come out of all air vents when opened.

WARNING

ON A HOT WATER SYSTEM THE PRESSURE MUST NOT EXCEED 30 POUNDS UNLESS THE BOILER IS ESPECIALLY DESIGNED FOR A HIGHER MAXIMUM WORKING PRESSURE. IF A BOILER PRESSURE EXCEEDS PRESSURE SETTING OF SAFETY RELIEF VALVE, VALVE WILL RELIEVE IMMEDIATELY, BUT CAUSE OF RELIEF MUST BE INVESTIGATED AND CORRECTED. EXCESS PRESSURE IS DANGEROUS, IN ADDITION, COULD CAUSE DAMAGE TO HEATING SYSTEM, PERSONAL INJURY OR SERIOUS PROPERTY DAMAGE.

DO NOT draw water from the boiler while in use. When adding water while boiler is in operation, do not open the supply valve fully, but add water slowly.

3. BURNER

- A. Check wiring of all fuel valves. Verify that wiring is correct according to the factory supplied wiring diagram.
- B. Leave all manual fuel valves closed. This includes manual shutoff valves supplied with the boiler and facility installed valves at the boiler site.
- C. Perform all burner pre-startup checks according to the burner manufacturer's specifications. Refer to the burner manufacturer's installation manual furnished with the boiler.

- D. Turn boiler on and verify that fuel valves are closed during the burner pre-purge cycle. Turn boiler off and disconnect power.
- E. Adjust burner according to the burner manufacturer's specifications.

4. TEST CONTROLS

WARNING

Before installation of the boiler is considered complete the operation of the boiler controls should be checked, particularly the low water cutoff and the high limit control.

- A. Check Operating Control – Raise and lower operating control setting as required to start and stop burner.
- B. Warning – Check High Limit Control – Jumper Operating Control Terminals. Allow Burner to operate until shut down by limit. Installation is not considered complete until this check has been made. REMOVE JUMPER.
- C. Check Low Water Cut-Off – control with water level at normal waterline. Raise operating control setting to allow burner to operate. Open boiler drain to allow water level to drop until burner operation is shut down by low water cutoff.

DANGER

DO NOT ALLOW THE BOILER TO OPERATE BELOW THE MINIMUM PERMISSIBLE WATER LEVEL AS INDICATED ON THE BOILER.

Close boiler drain and refill to normal water line. Unless boiler is equipped with a manual reset low water cutoff, burner should automatically restart during fill. Reset operating control.

IMPORTANT

PROBE AND FLOAT TYPE LOW WATER CUT-OFF DEVICES REQUIRE ANNUAL INSPECTION AND MAINTENANCE. Refer to Service Instructions for proper cleaning instructions.

- D. Check Operating Control – on boiler equipped with a tankless heater. With burner off, draw hot water until burner starts, then turn off hot water and check burner shut down.

5. CLEANING A NEW STEAM BOILER

Oil, grease & sediments which accumulate in a new boiler and piping must be removed from the system in order to prevent an unsteady water line and carryover of the water into the supply main above the boiler. Operate the boiler with steam in the entire system for a few days allowing the condensate to return to the boiler. If the condensate can temporarily be wasted, operate the boiler only for the length of time it takes for condensate to run clear. If the latter cannot be achieved or if the condensate is returned to the boiler, boil out the boiler using the SURFACE BLOWOFF connection on the boilers so equipped.

- A. Drain boiler until water is just visible in gauge glass. Run temporary pipe line from the surface blow-off to an open drain or some other location where hot water may be discharged safely. Do not install valve in this line.

Certain state and local codes may restrict the use of some chemicals listed for cleaning and maintaining the boiler. Check with local authorities before proceeding with the use of any chemicals.

- B. Drain about 5 gallons of hot water from boiler into a container and dissolve into it 1 pound of caustic soda and one pound of trisodium phosphate for each 50 gallons of boiler water. Additional containers may be required to dissolve sufficient chemicals for large models. Remove safety valve and add solution to boiler water through exposed tapping.

Use extreme care in handling these chemicals. Caustic soda is harmful to skin, clothing and eyes. Do not permit the dry material or the concentrated solution to come into contact with the skin or clothing.

- C. Close all valves leading to and from the system to isolate the cleaning solution from the system.
- D. Start Burner and operate sufficiently to boil the water without producing steam pressure. Boil for about 5 hours. Open boiler feed pipe sufficiently to permit a steady trickle of water from the surface blowoff pipe. Continue this slow boiling and trickle of overflow for several hours until the water coming from the overflow is clear.
- E. Stop burner and drain boiler in a manner and location that hot water can be discharged safely.
- F. When the boiler has cooled to 120°F or less refill boiler to normal water line. If water in gauge glass does not appear to be clear, repeat steps A thru E, boiling out the boiler for a longer time.
- G. Remove temporary piping, plug tapping and/or reinstall safety valve. Boil to bring water temperature to 180°F promptly in order to drive off any dissolved gases in the fresh water.

6. CLEANING A WATER BOILER

The oil and grease which accumulate in a new hot water boiler can be washed out in the following manner.

- A. Remove safety relief valve using extreme care to avoid damaging it.

NOTICE

Certain state and local codes may restrict the use of some chemicals listed for cleaning and maintaining the boiler. Check with local authorities before proceeding with the use of any chemicals.

- B. Drain about 5 gallons of hot water from boiler into a container and dissolve into it 1 pound of caustic soda and one pound of trisodium phosphate for each 50 gallons of boiler water.
- C. Add solution through exposed tapping, and reinstall safety valve.
- D. Fill the entire system with water.
- E. Start firing the boiler
- F. Circulate the water through the entire system.
- G. Vent the system, including the radiation.
- H. Allow boiler water to reach operating temperature, if possible.
- I. Continue to circulate the water for a few hours.
- J. Stop firing the boiler
- K. Drain the system in a manner and to a location that hot water can be discharged safely.
- L. When the boiler has cooled down to 120°F or less, remove plugs from all available returns and wash the water side of the boiler as thoroughly as possible, using a high-pressure water stream.
- M. Refill the system with fresh water, and bring water temperature to 180°F promptly in order to drive off any dissolved gases.

7. WATER BOILER OPERATION

The following guidelines relating to system water temperature fluctuation and flow through boiler must be observed.

- A. It is important to operate your boiler in such a manner as to prevent temperature fluctuation of more than 40°F at any time. Rapid temperature changes within the boiler can create stresses in the boiler metal. These stresses can cause damage to the boiler by loosening tubes, or in

more severe instances can crack tube sheet ligaments, furnaces, or waterlegs.

B. It is equally important to insure that there is circulation through the boiler of at least 1/2 GPM/BHP at all times when the boiler is firing.

8. BOILER WATER TREATMENT

Boiler water treatment will help maximize the effectiveness and prolong the life of pressure vessels.

The general objectives of boiler water treatment are:

- A.** Remove corrosive gases from feedwater and boiler water.
- B.** Prevent sludge and scale deposits on the water side heating surfaces.
- C.** Prevent foaming and carryover.

NOTICE

Consult with a local water treatment company regularly engaged in the treatment of boiler water for advice in maintaining the proper feedwater, boiler water, and condensate chemistry.

Certain state and local codes may restrict the use of some chemicals listed for cleaning and maintaining the boiler. Check with local authorities before proceeding with the use of any chemicals.

9. MAKE PH OR ALKALINITY TEST

After boiler and system have been cleaned and refilled as previously described, test the pH of the water in the system. This can easily be done by drawing a small sample of boiler water and testing with hydrion paper which is used in the same manner as litmus paper, except it gives exact readings. A small color chart on the side of the hydrion dispenser gives the reading in pH. Hydrion paper is inexpensive and obtainable from any chemical supply house or through your local druggist. The pH should be higher than 7 but lower than 11. Add some washout chemical (caustic soda), if necessary, to bring the pH within the specified range.

IMPORTANT

10. IMPORTANT

If, during normal operation, it is necessary to add water to this boiler more frequently than once a month, consult a qualified service technician to check your system for leaks. A leaky system will increase the volume of make-up water supplied to the boiler which can significantly shorten the life of the boiler. Entrained in make-up water are dissolved minerals and oxygen. When the fresh, cool make-up water is heated to the boiler the

minerals fall out as sediment and the oxygen escapes as a gas. Both can result in reduced boiler life.

Problems caused by oxygen and mineral contamination of boiler water are not covered under Burnham Commercial's standard warranty. Therefore, it is in everyone's best interest to prevent this type of system failure. The maintenance of the system integrity is the best method to achieve this.

SECTION IV — SERVICE INSTRUCTIONS

IMPORTANT

1. IMPORTANT

See item 10 under Operating Instruction if it becomes necessary to add water to the boiler more frequently than once a month.

2. GENERAL

Inspection should be conducted annually. Service as frequently as specified in paragraphs below. Before service or maintenance is performed complete boiler shutdown/cool-down procedure.

3. BOILER SHUT DOWN AND COOLDOWN PROCEDURE

NOTE: This procedure is generally required in preparation for corrective or preventative maintenance in the unit. This procedure must be supervised by an individual who is thoroughly qualified in operation and maintenance of the equipment at hand. This is written with Steam Boilers in mind, but the principles are applicable to Hot Water Boilers as well.

- A. Decrease plant load as much as possible.
- B. Turn boiler switch off. If control power from burner is used to support accessories, leave on until boiler system has cooled down.
- C. Shut and lock manual gas and oil valves as applicable.
- D. In single boiler installations, some small steam loads can remain on to assist in a controlled cool-down of the boiler (i.e., deaerator). In multiple boiler installations, shut down the non-return valve and the back up valve. Lock them shut.
- E. Allow the boiler feed pump to remain active. As the boiler cools down, the water level is reduced by demand or shrinkage. It is best to be aware of the boiler level at all times.
- F. When boiler pressure has decreased to 5 to 10 psi on the pressure gauge, open the boiler manual vent valve on the top of the boiler. This is to act as a sentinel against the increase in pressure and to prevent the boiler from going into a vacuum. Lock the valve open.

NOTE: Depending on the size of the boiler, the large mass of heating surfaces that are still hot can cause the boiler water temperature to increase, even if the gauge pressure is "0". It is better to allow the entire system to cool gradually, never force cool the boiler as damage can also be inflicted due to "thermal shock."

- G. When boiler and water are below 120°F, shut off power to the unit and lock out the circuit breakers.
- H. If required, open front and rear doors for observation of fireside surfaces.
- I. Drain boiler down as far as required. (Usually completely.) Make sure the vent valve on the top of the boiler remains open. Open and lock the float control low water cutoff drain valves. These will serve as additional vents.
- J. Shut and lock the boiler feed valves, and any blowdown valves that can be affected by other boilers in the same facility (i.e., bottom blow down valves can tie into a common blowdown separator in a multiple boiler installation).
- K. If necessary to remove handhole and/or manhole plates for water side inspection or maintenance, use extreme caution. Loosen the nuts securing the arch enough to allow the plate to drop approximately 1/8 inch when tapped loose with a mallet. Once again, ensure the pressure in the boiler is "0" before loosening the plate. Remove the plate the remainder of the way. Wear gloves and eye protection at all times.

4. CLEAN THE BOILER HEATING SURFACES AND FLUE

At least once each year, preferably at the end of the heating season.

A. Clean the Vent System

Vent system should be checked annually for:

- 1. Obstructions.
- 2. Accumulations of soot.
- 3. Deterioration of vent pipe or vent accessories due to condensation or other reasons.
- 4. Proper support – no sags, particularly in horizontal runs.
- 5. Tightness of joints.

Remove all accumulations of soot with a wire brush and vacuum. Remove all obstructions. Replace deteriorated parts and support properly. Seal all joints.

B. Clean the Boiler Heating Surfaces

At the end of the heating season, clean boiler heating surfaces thoroughly. Access to boiler firetubes may be gained by removing the front and rear smokeboxes or smokebox doors. Where applicable, remove the turbulators, paying close attention to which tubes have turbulators. Clean firetubes with flue brush and reinstall turbulators. If turbulators are corroded or deteriorated, replacing them will ensure a high level of

boiler efficiency. Remove soot and rust and reseal the boiler.

5. MAINTENANCE OF LOW WATER CUTOFF DEVICES

IMPORTANT

PROBE AND FLOAT TYPE LOW WATER CUTOFF DEVICES REQUIRE ANNUAL INSPECTION AND MAINTENANCE.

A. Probe Type Low Water Cut Off – Although these devices are solid state in design, the probe is exposed to possible contamination in the boiler water.

It is important to physically remove the probe from the boiler tapping annually and inspect it for accumulation of scale or sediment.

Following these steps inspect, clean and/or replace the probe:

1. Turn off electric service to the boiler.
2. Drain boiler water to a level below the tapping for the probe.
3. Disconnect the wiring connections between the low water cutoff and the probe.
4. Dismount the low water cutoff control from the probe.
5. Unscrew the probe from the boiler tapping.
6. Inspect that portion of the probe that is exposed to the boiler water for scale or sediment buildup.
7. Light deposits may be removed by wiping the probe with a damp cloth. Wiping the probe with a cloth soaked in vinegar will remove more tenacious lime deposits. The most stubborn deposits may be removed from the probe by using a diluted amount (3 part of water to 1 part) of phosphoric acid (H₂PO₄).

CAUTION

Exercise caution when handling phosphoric acid and follow the instruction label on its container.

8. Wire brushing of the probe is not recommended.
9. Clean the pipe threads of the probe to remove old, hardened pipe dope and other foreign matter.
10. Apply a moderate amount of good quality pipe dope to the pipe threads on the probe, leaving the first two threads bare. Do not use PTFE (Teflon) tape.
11. Screw the probe into the boiler tapping.
12. Mount the low water cutoff control on the probe.
13. Reconnect the control to probe wiring.
14. Fill the boiler to its normal waterline.
15. Add boiler water treatment compound as needed (see Section III Item 8).
16. Restore electric service to boiler.
17. Fire burner to raise water temperature to above 180°F to drive off free oxygen.

WARNING

BEFORE RETURNING BOILER TO SERVICE: Follow the low water cutoff check out procedure in Section II Item 4 Part C.

B. Float Type Low Water Cut-Off – During the heating season, if external low water cutoff is on the boiler, the blow off valve should be opened once a month (use greater frequency where conditions warrant), to flush out the sediment chamber so the device will be free to function properly.

Low water cutoffs and water feeders should be dismantled annually by qualified personnel, to the extent necessary to insure freedom from obstructions and proper functioning of the working parts. Inspect connecting lines to boiler for accumulation of mud, scale, etc., and clean as required. Examine all visible wiring for brittle or worn insulation and make sure electrical contacts are clean and that they function properly. Give special attention to solder joints on bellows and float when this type of control is used. Check the float for evidence of collapse and check mercury bulb (where applicable) for mercury separation or discoloration. **DO NOT ATTEMPT TO REPAIR MECHANISM IN THE FIELD.** Complete replacement mechanisms, including necessary gaskets and installation instructions, are available from the manufacturer.

6. CHECK BURNER AND CONTROLS at least once a year. See Item 4 under Operating Instructions for control checks. See Burner Manual for burner tests and adjustments.

7. LUBRICATE BOILER COMPONENTS according to manufacturer's instructions. Generally, this involves burner and circulator.

8. CHECK SAFETY VALVE at the start of each heating season and once or twice during the season to be sure it is in working condition. To do this, fasten wire or cord to the lever of the valve and pull the lever standing a safe distance away from the valve.

9. ATTENTION TO THE BOILER WHILE NOT IN OPERATION.

IMPORTANT

- A. If a boiler is not used during the winter months, and it is in a place subject to freezing, it must be fully drained to prevent freeze damage.
- B. Steam Boilers – Procedure for taking steam boilers off line at the end of heating season: Drain off boiler water until it runs clear while holding the boiler temperature between 180 and 200°F. Then refill to top of gauge glass.

- C. Water Boilers – Since a water boiler is a closed system, no draining/refilling should be necessary.
- D. Note any time raw water is introduced into the boiler it must be immediately heated to 180F to drive off dissolved gases. If water treatment is used, sufficient water treatment compound should be added to condition the make-up water.

10. REPAIR PARTS

Give boilers series and model number when ordering repair parts. All repair parts can be ordered through your local representative or call us at 888-791-3790 .

PERIODIC TESTING RECOMMENDED CHECK LIST

ITEM	FREQUENCY	ACCOMPLISHED BY	REMARKS
Gauges, monitors, and indicators	Daily	Operator	Make visual inspection and record readings in log
Instrument and equipment settings	Daily	Operator	Make visual check against recommended specifications
Firing rate control	Weekly Semi-annually Annually	Operator Service Technician Service Technician	Verify factory settings Verify factory settings Check with combustion test
Igniter	Weekly	Operator	Make visual inspection, check flame signal strength, if on display (see "combustion safety controls")
Fuel Valves Pilot and Main	Weekly	Operator	Open limit switch - make aural and visual check - check valve position indicators and check fuel meters if so fitted
Pilot and Main Gas or Oil	Annually	Service Technician	Perform leakage tests - refer to burner instructions
Combustion Safety Controls Flame Failure	Weekly	Operator	If flame display installed, read and log; for both pilot and main flames, notify service organization if readings are very high, very low or fluctuating; refer to burner instructions.
Flame Signal Strength	Weekly	Operator	If flame display installed, read and log; for both pilot and main flames, notify service organization if readings are very high, very low, or fluctuating; refer to burner instructions.
Pilot Turndown Tests	As required/ Annually	Service Technician	Required after any adjustments to flame scanner mount or pilot burner; verify annually - refer to burner instructions
Low Water Fuel Cutoff and Alarm	Daily/Weekly Semi-annually	Operator Operator	Refer to control instructions Perform a slow drain test in accordance with ASME Boiler and Pressure Vessel Code Section VI
High Limit Safety Control	Annually	Service Technician	Refer to control instructions
Operating Control	Annually	Service Technician	Refer to control instructions
Air Proving Switch	Monthly	Operator	Refer to burner instructions

PERIODIC TESTING RECOMMENDED CHECK LIST

ITEM	FREQUENCY	ACCOMPLISHED BY	REMARKS
Atomizing Air/Steam	Annually	Service Technician	Refer to burner instructions
High and Low Gas Pressure Interlocks	Monthly	Operator	Refer to burner instructions
High and Low Oil Pressure Interlocks	Monthly	Operator	Refer to burner instructions
High and Low Oil Temperature Interlocks	Monthly	Operator	Refer to burner instructions
Fuel Valve Interlock Switch	Annually	Service Technician	Refer to burner instruction
Purge Switch	Annually	Service Technician	Refer to burner instructions
Burner Position Interlock	Annually	Service Technician	Refer to burner instructions
Low Fire Start Interlock	Annually	Service Technician	Refer to burner instructions
Automatic Changeover Control (dual fuel)	At Least Annually	Service Technician	Under supervision of gas utility
Safety Valves	As required	Operator	In accordance with procedure in Section VI, ASME Boiler and Pressure Vessel Code, Recommended Rules for Care and Operation of Heating Boilers or Section VII for power boilers.
Inspect Burner Components	Semi-annually	Service Technician	Refer to burner instructions



TERMS AND CONDITIONS OF SALES FOR COMMERCIAL STEEL BOILERS

PRICES AND TERMS OF PAYMENT

- A. Prices quoted are firm for no more than 30 days from the date of quotation subject to any conditions stated in Seller's quotation or in an order submitted by Buyer and expressly accepted in writing by Seller. Seller will not be bound by any price sheet or quote other than a price quote signed by an authorized representative of Seller.
- B. Prices on orders accepted by Seller are firm, to the extent stated in the accepted order, subject to the following:
1. The purchase order must provide for shipment within six months of the date of purchase order.
 2. Any shipment made more than six months after such a date is subject to a price adjustment, at Seller's sole discretion, to the Seller's price in effect at the time of shipment, which will not exceed 125% of the price on the acknowledged purchase order.

AND

3. Any shipment more than 12 months after the date of purchase order will be invoiced at Seller's price in effect at the time of shipment.
- C. On orders having a total price of less than \$100,000 payment will be due "net in 30 days" from date of shipment, unless otherwise specifically agreed by Seller. On orders having a total purchase price of \$100,000 or more terms are 10% with order, 45% upon Seller's receipt of Buyer's approval of drawings, 45% within 30 days after shipment and 5% at the start-up of the products or within 90 days of shipment, which ever occurs sooner.
- D. The price of parts, components and other items not manufactured by Seller is subject to adjustments by Seller to reflect price changes by Seller's suppliers.
- E. Orders accepted by Seller are subject to credit investigation and approval. If Buyer's financial condition at any time does not justify the terms specified, Seller may require advance of payment or, if shipment has been made, recover shipment from the carrier. A service charge of 1-1/2% per month will be added to all accounts 30 days past due.
- F. Any tax or governmental change now or hereafter levied upon the production, sale, use or shipment of products ordered or sold will be charged to and paid by the Buyer, unless the Buyer has provided Seller with a tax exemption certification acceptable to the applicable taxing authorities. Such taxes are not covered in the selling price unless expressly stated on the quotation form.

SECURITY INTERESTS

Notwithstanding transfer of title to Buyer, the Seller retains and the Buyer hereby grants to the Seller a purchase money security interest in all products sold, and Buyer hereby irrevocably appoints Seller as its attorney-in-fact to execute and deliver, in Buyer's name, any such financing statement of other documents as may be necessary under the Uniform Commercial Code or other applicable laws governing the items sold herein to perfect Seller's interest therein.

Buyer will obtain and maintain insurance against the loss or damage naming Seller as an additional insured in an amount sufficient to protect Seller's interest in all products until the purchase price has been paid in full.

CHANGES, ORDERS AND CANCELLATION

Seller may adjust the selling price to cover any requested change in specification or other terms after the receipt of the Buyer's order. Orders accepted by Burnham Commercial shall not be canceled by the Buyer except at Burnham Commercial's sole discretion. In the event of any cancellation, Burnham Commercial reserves the right to impose a cancellation charge sufficient to cover all losses and out-of-pocket costs incurred by Seller in connection to such order, including materials and labor charges and cancellation charges from vendors, plus a cancellation charge of 20% of the original face amount of the order to compensate the Seller for its loss in profit.

RETURNED GOODS

Products may not be returned for refund or credit until after Seller has agreed to accept them. Inspection by a Seller representative may be required before return authorization is granted. A minimum restocking and handling charge of 25% (plus cost of any missing parts or components and inbound freight) will apply to all such returned products. All transportation charges for such products must be paid by Buyer.

TRANSPORTATION TERMS AND CLAIMS

Unless otherwise stated on Seller's quotation form, all process are F.O.B. Seller's shipping point. Delivery to the initial carrier shall constitute delivery to the Buyer. Seller's responsibility ceases and title of the goods passes, subject to Seller's security interests upon delivery in good order to such carrier, and all products are shipped at the Buyer's risk. The Buyer agrees to examine all deliveries carefully before signing transportation receipts. If products are visibly damaged the Buyer shall require that written confirmation of damage be noted on the carrier's delivery receipt and confirmed by the driver for the carrier. If damage is discovered after unpacking, the carrier shall be notified at once so that an inspection can be made and the claimed damage substantiated by the carrier.

FORCE MAJEURE AND STORAGE

- A. Seller shall not be liable for any delay or failure in the delivery or shipment of products or for any damages suffered by reason of such delay or failure directly or indirectly, due to fire, flood, other weather conditions, accident, riots, war, embargo, labor stoppages, inadequate transportation facilities, shortage of materials or supplies, regulation by government authority or any cause beyond the Seller's control.
- B. Seller reserves the right to allocate available production among its customers in any fair and reasonable manner that it determines is necessary or desirable.
- C. If delivery is delayed due to any cause beyond the Seller's control, Buyer shall reimburse Seller for any added costs. Without limiting the foregoing, product on which manufacture or delivery is delayed due to cause may be placed in storage by Seller, for the Buyer's account and risk, and regular charges therefore and expense in connection therewith shall be paid by the Buyer. If, in Seller's opinion, it is unable to obtain or continue such storage, the Buyer will, on request, provide or arrange for suitable storage facilities and assume all costs and risks in connection therewith.

SHORTAGES, VARIANCES AND WEIGHTS

No claims for variance from or shortages in orders will be considered unless presented within 30 days after receipt of products. Any shipping weights given or estimated are approximate, for the Buyer's convenience only, and not guaranteed by Seller.

LIMITS OF LIABILITY

Any action by Buyer on this contract, must be commenced within one year after the cause of action accrues. Actions on Seller's Warranties shall be limited as provided therein. Seller shall in no event have any liability for any liquidated damages, consequential damages or penalties, whether on account of lost profits, or otherwise, unless specifically agree in writing signed by an authorized representative of Seller.

PRODUCT CHANGES

Seller reserves the right to make changes in products of any kind without prior notice, and to deliver revised designs or models of products against any order. Seller shall have no responsibility whatsoever with respect to changes made by the manufacturer of products sold but not manufactured by it.

PATENTS

Products manufactured and sold by Seller may be used by the Buyer pursuant to such patent rights as Seller may own or enjoy. Seller shall not be liable for any use such products may be put as part of any system, mechanism or process covered by patent rights of others.

TESTS

Any tests requested by the Buyer to determine the performance of products covered by Seller's quotation must utilize procedures acceptable to Seller, and the Buyer is responsible for costs thereof. Whenever an order includes start-up or service agreement, Seller shall not be obliged to provide start-up or other service as long as payment to Seller is default.

CONFLICTING PROVISIONS OFFERED BY BUYER

Any terms and conditions of Buyer's purchase order which are different from, in addition to or inconsistent with the terms and conditions contained herein, are hereby objected to, and will not be binding on Seller in any manner whatsoever unless accepted by Seller in writing. Seller shall ship products referred to in this document only on the condition that the terms and conditions of sale set forth hereon shall be binding on the Buyer.

APPLICABLE LAW

Any order or contracts received by Seller from Buyer shall be governed by, construed and enforced by the laws of the Commonwealth of Pennsylvania.

COMPLETE AGREEMENT

The complete agreement between Seller and Buyer is contained herein and any specifications signed by the Seller, and no additional or different terms or conditions stated by Buyer shall be binding unless agreed to by Seller in writing. Neither course of dealings, nor usage of trade shall be relevant to supplement or explain any terms used in this Agreement, and this Agreement may be modified only by a writing signed by both Seller and Buyer. The failure of Seller to insist upon strict performance of any of the terms and conditions stated herein shall not be considered as a continuing waiver of any such terms and conditions or any of Seller's other rights.

CHANGES IN TERMS

These terms and conditions of sale are subject to change by Seller from time to time without prior notice.



BURNHAM
COMMERCIAL
AMERICA'S BOILER COMPANY

LIMITED WARRANTY

LIMITED WARRANTY

Subject to the terms and conditions herein, Seller warrants to the original owner at the original installation site that products manufactured by Seller ("Products") comply, at the time of manufacture, with recognized hydro-nics industry regulatory agency standards and requirements therein effect and will be free from defects in materials and workmanship for a period of 12 months after the date of start-up or 18 months after the date of shipment, whichever shall be less (the "Warranty Period")

REMEDY

A. The sole remedy for breach of this warranty is expressly limited to the repair or replacement of any part found to be defective under conditions of normal use within the Warranty Period. Installation is not included.

B. Warranty - The owner must notify the original installer of the Product and Seller (Attention: Burnham Commercial, PO Box 3939, Lancaster, PA 17604) in writing, within the Warranty Period, providing a detailed description of all claimed defects. Transportation to a factory or other designated facility for repairs of any products or items alleged defective shall, in all events, be the responsibility and at the cost of the owner.

EXCLUSIONS

Seller shall have no liability for:

A. Incidental, special or consequential damages such as loss of the use of products, facilities or production, inconvenience, loss of time or labor expense involved in the repairing or replacing of the alleged defective Product.

B. The performance of any Product under conditions varying materially from those under such Products is usually tested under industry standards as of the shipment time.

C. Any damage to the Product due to abrasion, erosion, corrosion, deterioration, abnormal temperatures or the influence of foreign matter or energy.

D. The design or operation of owner's plant or equipment, or of any facility or system of which any Product may be made a part.

E. The suitability of any Product for any particular application.

F. Any failure resulting from misuse, modification, not authorized by Seller in writing, improper installation or lack of proper maintenance.

G. Equipment furnished by the owner, either mounted or unmounted, or when contracted for by owner to be installed or handled.

Seller's liability under this warranty shall not in any case exceed the amount paid for the Product found defective.

THIRD-PARTY WARRANTIES

For goods or components not manufactured by Seller, the warranty obligations of Seller shall, in all respects, conform and be limited to the warranty actually extended to Seller by its vendors.

SEVERABILITY

To the extent that any provisions of this warranty would be void or prohibited under applicable law, such provisions shall be limited in effect to the minimum extent necessary to render the remaining provisions hereof enforceable.

NO OTHER WARRANTIES

Seller makes no implied warranty of merchantability or fitness for a particular purpose, or other warranties with respect to any products or services except as expressly set forth in this limited warranty.

Form No. 81460393
Printed in the U.S.A.
Lancaster, PA 17601
Phone: 888-791-3790
www.burnhamcommercial.com