


Instructions for Installing 55 Watt, 24V DC Power

⚠ WARNING	TO AVOID SHOCK HAZARD, DISCONNECT ALL POWER BEFORE ANY FUNCTIONS ARE PERFORMED ON THIS EQUIPMENT.
⚠ AVERTISSEMENT	
	POUR EVITER TOUT CHOC ELECTRIQUE, COUPER L'ALIMENTATION DE CET EQUIPEMENT AVANT D'Y EFFECTUER DES TRAVAUX.
Hazard of Burn or Electrical Shock	
Risque de Brulure ou de Choc Electrique	

Installation

The Intelligent Technologies Power Supply comes standard as a panel mount unit. There are four mounting holes on the unit. Use Size #8 screws when mounting the unit. With the addition of the PSSDIN mounting kit, you can make the unit into a 35 mm DIN-rail mountable unit. All three units come standard with internal input fusing. The unit is also designed to reach a crowbar current and safely shut itself down when a secondary side short circuit is encountered. The unit will recover automatically when the short circuit is removed.

NOTE: WHEN WIRING THE SYSTEM, INSURE ALL POWER IS REMOVED BEFORE BEGINNING THE INSTALLATION.

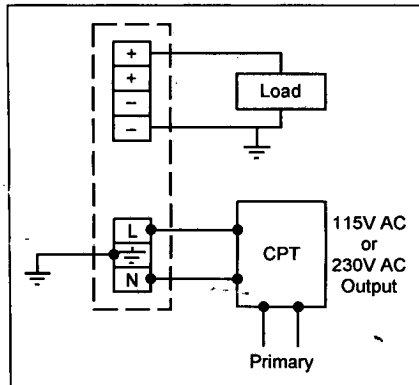


Figure 1

Input Wiring Requirements

The PSS55A is a 115V AC single-phase input power supply. The PSS55B is a 230V AC single-phase input power supply. Both can be wired to Neutral and the center terminal wired to the Ground. See Figure 1.

The PSS55C is a 360V – 480V AC three-phase input power supply. The unit should be wired to the line voltage. The top terminal is wired to the Ground. See Figure 2.

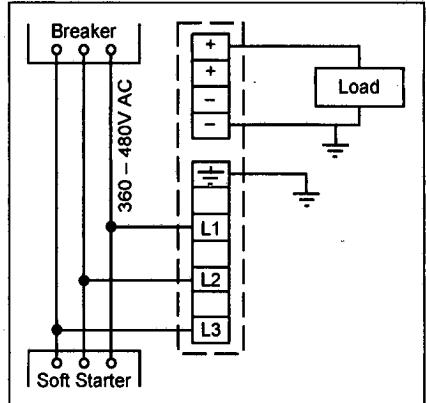


Figure 2

Output Wiring Requirements

All PSS55 units have two output connections (two +, two -) for ease of wiring. The two outputs are tied together and are not electrically isolated.

The PSS55 power supplies are not designed to operate in parallel and no provisions have been made for load sharing. The units can be operated in series as shown in Figure 3.

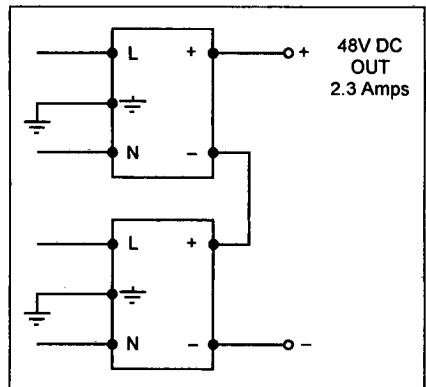


Figure 3

Catalog Number	PSS55A	PSS55B	PSS55C
Output Specifications			
Output Voltage Nominal	24V DC		
Voltage Regulation	± 3%		
Steady State Wattage	55W		
Outrush Wattage	240W		
Outrush Holdup Time (msecs)	180 msecs		
Output Current	2.3A		
Maximum Capacitive Load	10,000µF		
Holdup Time (msecs)	120 msecs		
Overload Protection	Overcurrent shutdown with automatic restart		
Input Specifications			
Input Voltage Nominal	115V AC	230V AC	360V – 480V AC
Voltage Range	± 15%		
Input Frequency	47 – 63 Hz		
Input Current	0.9A	0.53A	0.13A/phase
Input Protection			
Inrush Current	15A	30A	15A
Overvoltage	390V AC		550V AC
Fused	Yes		
Switching Frequency	100 kHz		
Efficiency (at Maximum Load)	80%		85%
Maximum Ripple	± 1%		
Operating Specifications			
Dielectric Strength			
Input to Output	3 kV AC		
Input/Output to DIN Rail	3 kV AC		
Input to Ground	1.5 kV AC		
Output to Ground	200V AC		
Temperature — Operating (No Derating)	-13 – 122°F (-25 – 50°C)		
— Storage	-40 – 185°F (-40 – 85°C)		
Altitude	< 6,562 ft. (2,000 m)		
Operating Humidity	20 – 85% RH non-condensing		
Vibration	3g		
RFI Specification	Class A		
Degree of Protection (IEC 529)	IP20		
Wiring Specifications			
Wire Size — Primary	20 – 14 AWG		
Clamp Screw Tightening Torque in lb-in (Nm)	4.38 (0.5)		
Wire Size — Secondary	20 – 14 AWG		
Clamp Screw Tightening Torque in lb-in (Nm)	4.38 (0.5)		
Output Connections	2		2
Insulation Stripping Length — in Inches (mm)	0.35 (9)		
Mounting Method	Panel Mount		
DIN Rail Mounting Kit	PSSDIN		
Dimensions and Weights			
Mechanical Dimensions — in Inches (mm)	2.09 x 3.86 x 5.59 (53 x 98 x 142)		2.32 x 4.21 x 6.73 (59 x 107 x 171)
Approximate Weight — in Lbs. (kg)	1.06 (0.48)		1.17 (0.53)
Standards			
Certifications and Standards	cULus, IEC		