

QUICK START 9300-RADES

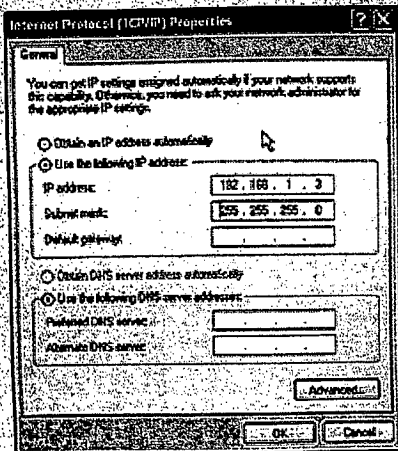
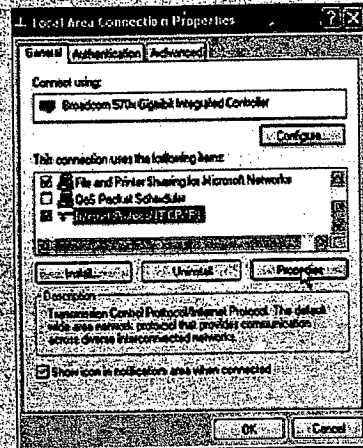
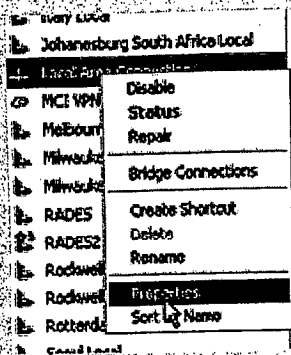
A Apply power to the unit in one of two ways:

1. Use the power supply that comes with the unit
OR
2. Connect 8-48VDC to the unit's power terminals

B Connect to your computer's LAN card

NOTE: Patch cable or cross-over cable can be used.

1. Right click on LAN Connection
2. Highlight TCP/IP and click Properties



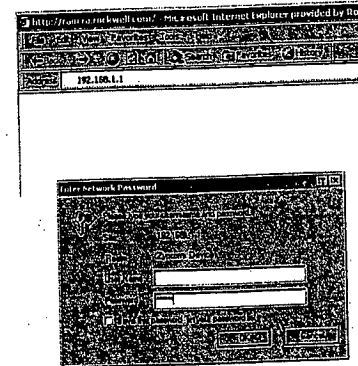
3. Change LAN / IP address to:

192.168.1.3 /
255.255.255.0

QUICK START 9300-RADES

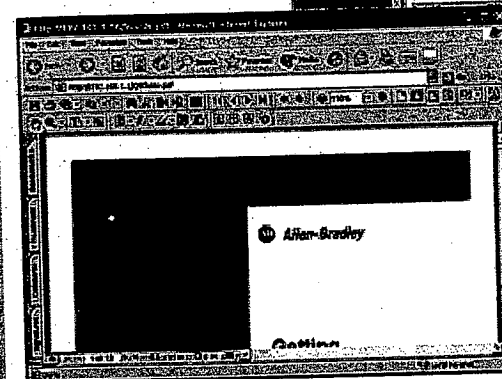
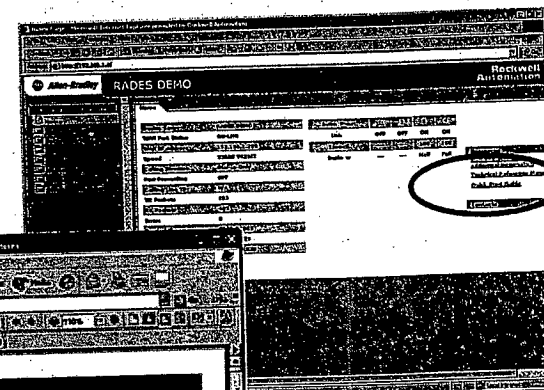
C Connect to the 9300-RADES via a Web browser

1. Open browser window
2. Enter the default IP address (192.168.1.1) of the 9300-RADES in the address bar and click GO.
3. The Default Username is: (leave this field blank) The Default Password is: ZYPCOM



D Configure the 9300-RADES

1. Click on the Quick Start Guide link



2. Refer to the embedded Getting Started Guide for complete configuration instructions

Customer Support
(440)646-5800

GMSC00-QS002C-EN-P — November 2004

**Rockwell
Automation**

Global Manufacturing Solutions