

Columbus Electric

REV - 3076-13

INSTALLATION & INSTRUCTION SHEET RH35AU AIR FLOW SWITCH

DESCRIPTION

This Air Flow Switch may be used to sense duct static pressure or to prove blower is running and performs as an interlock to assure proper air movement when equipment is on and running.

The device is gravity sensitive and must be installed in a vertical position

SPECIFICATIONS

Electrical Rating

5.8 FLA, 34.8 LRA, 1/4 HP @ 125 Vac

4.9 FLA, 29.4 LRA, 1/2 HP @ 250 Vac

2.7 FLA, 16.2 LRA @ 277 Vac

57 VA pilot duty @ 24 Vac

300 VA pilot duty @ 125 Vac

410 VA pilot duty @ 208 Vac

490 VA pilot duty @ 240 Vac

300 VA pilot duty @ 277 Vac

15 A non-inductive @ 125 Vac to 277 Vac

Differential

RANGE ADJUSTABLE .05" TO 2.0" WC
DIFFERENTIAL @ .05" WC +/- .02" WC

Temperature Range

AMBIENT OPERATING TEMPERATURE

-40° TO +180° F

MAXIMUM SUSTAINED PRESSURE: 0.5 PSI

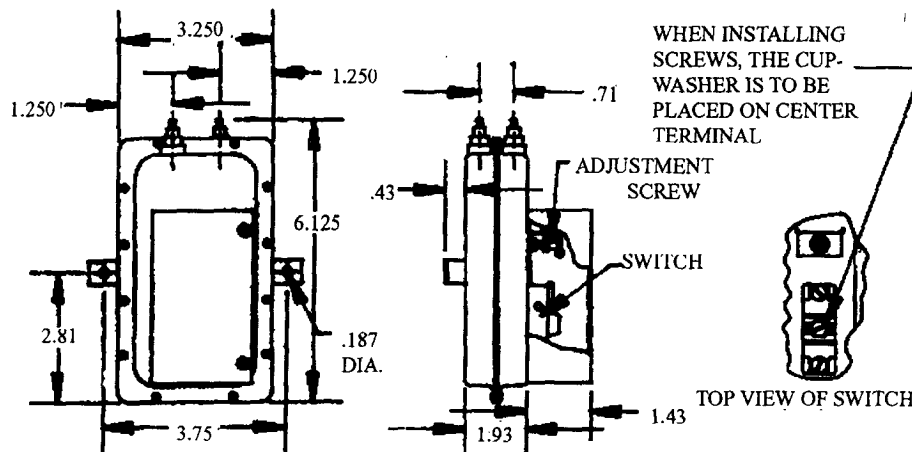
INSTALLATION/OPERATION

WIRING

All wiring should be done according to local and national electrical codes and ordinances.

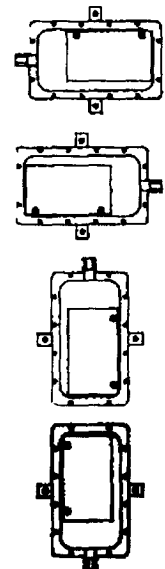
The Air Flow Switch is gravity sensitive and must be installed to a vertical surface as shown. If difficulty is experienced in resetting the switch, tilt the control slightly keeping the switch side up. This may be necessary because the snap switch is very sensitive and the diaphragm may be resting on the switch actuator prohibiting it from operating. In this situation, the switch must be relieved of all pressure prior to resetting.

The Control can be adjusted in the field by resetting the adjusting screw located inside the junction box (see below). Adjusting the screw in a clockwise direction increases the air pressure required to actuate the switch.



MOUNTING INSTRUCTIONS

The Air Switch must be mounted to a vertical surface, as shown in below drawings to assure that diaphragm will be in a vertical plane.



LIMITED WARRANTY

Products manufactured by TPI Corporation are warranted to the original consumer to be free from defects in material and workmanship for twelve (12) months from the original purchase date.

The TPI limited warranty does not cover products that have been modified outside of our factory, damage or failure caused by acts of God, abuse, misuse, connected to or placed on other than rated voltage, abnormal usage, fault, installation, failure to follow suggested maintenance procedures enclosed with the product, improper maintenance or any repairs other than those provided by an authorized TPI service center.

There are no obligations or liabilities on the part of the Corporation for consequential damages arising out of or in connection with the use or performance of the product or other indirect damages with respect to loss of property, revenues, profit, costs of removal installation, or reinstallation.

All implied warranties with respect to TPI products, including implied warranties for merchantability and implied warranties for fitness, are limited in duration to twelve (12) months from original date of purchase, except those products or parts of products which are warranted for long periods thereon.

Some states do not allow the exclusions or limitation of incidental or consequential damages and some states do not allow limitations on how long an implied warranty lasts. The above exclusions or limitations may not apply to you.

During the warranty period, TPI Corporation will, at its sole option, repair or replace any defective parts or products returned, freight prepaid, to the TPI Corporation factory or such other locations as TPI Corporation may designate. Returned products must be packaged carefully and TPI Corporation shall not be responsible for damage in transit.

When returning parts, the owner must provide the model number of the product and nature of difficulty being experienced. This warranty does not obligate TPI Corporation to bear the cost of labor in replacing any assembly, unit or component part thereof, nor does the company assume any liability for secondary charges, expenses for installing or removal, freight or damages. There will be charges rendered for product repairs made after the warranty period has expired. Proof of purchase, including date, must accompany request for in-warranty service. In any event, TPI Corporation's maximum liability shall not in any case exceed the list price for the product claimed to be defective. This warranty gives to you specific legal rights and you may have other rights, which may vary from state to state. For the name of your nearest authorized TPI Corporation service center, please write to TPI Corporation, P.O. Box 4973, Johnson City, TN 37602.

Heating Products Warranty Coverage	
Elements in Baseboards	10 Years
All Other Heating Products	1 Year
Thermostats and Controls	2 Years

Ventilation Products Warranty Coverage	
Series HD or HDH Fans	5 Years
Series UHP of IHP Fans	3 Years
All other Ventilation Products	1 Year



TPI Corporation
P.O. Box 4973
Johnson City, TN
37602-4973

Rev. 11/20/03
FORM: 9882